

**CRAZYFLY**

**CF**



**2018**





# INTRO

2018

Presenting a new range of products is the most exciting time of the year. Everyone is full of expectations to see the news and we are anxious to see the reactions of our customers.

For 2018, we have built on the success of our own kite factory which gave us unlimited space for improvement as changes and tweaks can be applied instantly. Yet again, we have pushed the boundaries of kite construction and durability, as well as their performance in the sky. The craftsmanship on the kites is breathtaking and we are extremely proud to continue innovating the kite construction.

My personal favorite this year, is the brand new Raptor LTD, where we finally managed to improve the shape after seven years and many unsuccessful attempts. Sometimes the road has many turns and obstacles, but with patience, hard work, dedication and passion, it is always possible to create what seems impossible in the beginning. With such beauty, I could not resist my temptation of offering the Raptor LTD in two color versions.

Last but not least, I am pleased to announce the introduction of the first CrazyFly foil products, where we have prepared state of the art full carbon treats.

We are extremely proud to be the only kite brand making all our products in Europe in our own factory. With this set up, we have become bigger and stronger than ever before.

I would like to personally thank every one of our partners and customers for your continued support.

Looking forward to another great season together.



**JOZEF BUKOVČÁK**

general manager  
kite designer  
board designer





# ALL MADE IN EUROPE

## CrazyFly kite and board factory

CrazyFly brand has been built on high quality manufacturing in the heart of Europe and exceptional customer service. We are extremely proud to be the first and only Kiteboarding brand producing all of our products in our own factory based in Europe. This includes the production of kites, kiteboards, control bars, and board accessories.

Having our production and R&D department right next to our offices allows us to set new trends on the market and innovations are applied into products very quickly. Sourcing the best materials available from European suppliers also adds to superior quality of our products.

We are extremely proud to be the first and only Kiteboarding brand to produce inflatable kites in Europe. We believe this deserves special attention.

Our factory is equipped with the latest high tech machinery such as CNC laser cutting and sewing, high frequency bladder welding etc. The machinery is backed up by highly skilled workers. We are lucky to be based in the suburb of Trenčin, which is also known as the city of fashion in Slovakia. Trenčin has a long history of premium fashion production dating back to 1907.

With combining our knowledge of kite design, the latest machinery and highly skilled workforce, we were able to achieve numerous innovations and improvements on the 2018 kites construction. The kites themselves are more rigid than ever, which results in unmatched flight characteristics and ultimate durability of the 2018 kites.

Every single kite produced in our factory is made from the latest high performance fabrics, such as Triple Ripstop, Dacron, Marcloth, ArpTex etc., and precisely put together with attention to every small detail. Quality of additional materials like PU bladders, Polyester abrasion resistant threads and Dyneema® bridle lines are second to none.

The 2018 kites are truly the best kites we have ever made.





# IT'S A FAMILY BUSINESS

## Kiteboarding since 1999

CrazyFly is a family business, founded in 1999 by Jozef Bukovcak. Jozef, the Big Boss, is a sole owner of CrazyFly Kiteboarding, and he is also the main kite designer, board designer and general manager. Jozef and his wife Iveta built the company around the philosophy of high quality products sold at competitive prices and supported with superior customer service. As this philosophy proved successful and time moved on, Jozef's sons were continuously joining the company after graduating. At the moment, Jozef has his wife, four sons, two daughters in law, and one son's mother in law are all working in the company.

Kiteboarding is literally our daily bread, so we pride ourselves with what we think is the best customer service in the industry. Having no external financing gives us freedom to go in our own direction and make decisions quickly. It also allows us to set very competitive prices for our products. Because we believe in quality, we have our own factory in Slovakia, which gives us unlimited possibilities for improvements. The new factory is also the most eco-friendly kiteboard production.

Most importantly, we are all doing what we love and we love what we are doing.



**CRAZYFLY**  
KITEBOARDING SINCE 1999





**KITES**





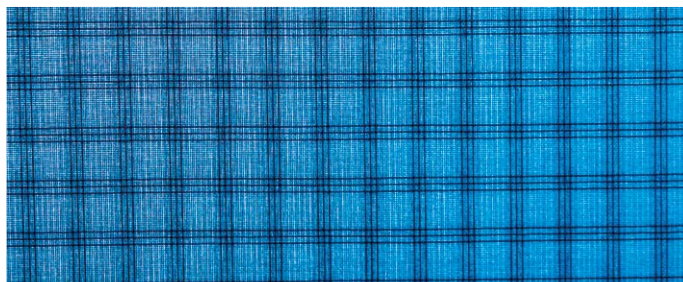




# KITES TECHNOLOGY

Made in Europe.

Having our own kite factory in Europe opened up unlimited possibilities of material selection and for innovating the kite construction. We looked at the kite construction from scratch and came up with never before seen innovations. The innovative construction is put together from latest high performance fabrics, such as Triple Ripstop, Dacron, Marcloth and ArpTex.



## TRIPLEX

Brand new and exclusive to CrazyFly, we introduced Triplex, the most advanced ripstop material on the market. Triplex has the best strength to weight ratio and with triple coating its durability is unmatched. The coating protects it from UV rays, salt and abrasive objects, like sand. Triple coating and three ripstop yarns ensure the lowest possible elongation and deterioration of the material till date.



## TAILORED CANOPY

Smart, fitted and well cut. Without any compromise to the kite's shape, we have created a Tailored Canopy, where we have been able to unite multiple panels into one. As a result, the canopy has less panels, which saves weight and at the same time creates a more unified and stronger skin of the kite.



## SWEPT LEADING EDGE SEAM

By challenging the traditional kite construction for improvements, we came up with the swept leading edge seam. The leading edge seam on the wingtips of the kite is swept higher towards the canopy where it has less influence on airflow. This allows for higher aerodynamic efficiency and more precisely controlled kite.



## UNITED DACRON PANEL

This revolutionary feature increases the kite's rigidity and reactivity allowing for better flight experience. Every seam on the kite gets stretched over time, especially in the stressed area pulled by the backlines. So, instead of using multiple Dacron panels, we used a single United Dacron Panel. The reactions of the kite are noticeably quicker and they do not fade over time.



## PENTAGON TRAILING EDGE

While using much more Dacron on the kite, we needed more support on the Trailing Edge. The Pentagon Trailing Edge proved to be the best solution for the current kite construction. It offers the best support and minimized flutter for optimal flight properties and long lasting durability.



## ARPTEX SHIELDS

Arptex sits at the top of abrasion resistant polyamide textiles. This high tech fabric made in Italy can handle plenty of abuse without getting damaged. The official number is 100 000 contacts with abrasive surface before the material starts deteriorating. This is why we selected it as the most suitable material to protect our kites in the most abused areas and increase the size of the Arptex Shields.



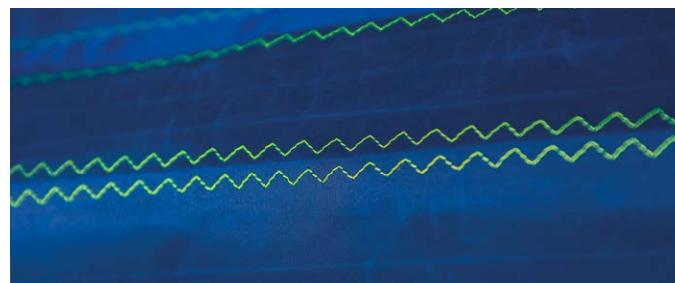
## LINKED BRIDLE

The Linked Bridle does not have any pulleys nor sliders. It creates a direct link between the rider and the kite, resulting in faster kite reactions and more controlled handling. The Linked Bridle is also much more durable than conventional bridles, as it reduces bridle line movement and abrasion to minimum.



## ELLIPSE SEGMENTED STRUT

For 2018 we implemented a brand new Ellipse Segmented Strut construction. The strut is split into three segments with an ellipse like cut. Only the segment connected to the Leading Edge has the center seam on the outer side. We used the seam connecting the struts to the canopy to close the struts at the same time. These result in better profile of the strut and much more strength in the struts.



## SYNERGY STRUT BOND

Because the rigidity of the kite is vital for reaching higher performance, we searched for every single way of improving this aspect on our kites. Instead of a single attachment seam, we connected the strut to the canopy with two parallel seams, creating the ultimate synergy between the strut and the kite. This synergy noticeably improved how the kite generates power during turns and kitemoops and how it holds its shape during flight.



## TURBO INFLATE/DEFLATE

All CrazyFly kites are equipped with Turbo inflate/deflate valve. Inflation and deflation of the kite are made through the same valve. The kite is fully inflated and deflated in seconds. The Turbo valve has an Arptex cover, which does not intake water and does not add weight to the kite.





## WINGTIP ELBOW

The Wingtip Elbow construction is stronger than ever with brand new Dacron reinforcements on the inside and Marcloth lining on the outside. Plus, the Swept Leading Edge Seam is placed in the direction in which the elbow was bending the most. These factors minimize the elbow movement, so the kite is more compact, has higher aerodynamic efficiency and better handling.



## CNC CUTTING & SEWING

CNC controlled laser cutting ensures maximum precision of all kite panels and results in accurate kite shapes. CNC controlled laser cutting also reduces waste of offcut material. CNC sewing is used for critical and difficult seams on all CrazyFly kites. This technology eliminates human error and enables perfection to be repeated on every seam.



## COMPUTED LASER CUTTING

In order to achieve the highest precision and the best possible in flight symmetry of the kite, we use state of the art computed laser cutter for all fabric panels on the kites. By cutting with a laser, all kite panels have heat sealed edges at the same time.



## GERMAN POLYESTER THREAD

All threads used on CrazyFly kites are high end UV protected and water resistant threads made in Germany. They have all properties required for the perfect kite thread: amazing strength, light weight, minimal water absorption, UV protection and high abrasion resistance.



## ONE PUMP SYSTEM

The One Pump System allow for quicker and easier inflation and deflation of the kite and ensure even pressure distribution throughout the kite. The valves are made from the highest quality material available and are manufactured in Europe. Brand new this year, the one pump hose clips are covered with Arptex, which unlike Neoprene does not intake water which reduces weight.



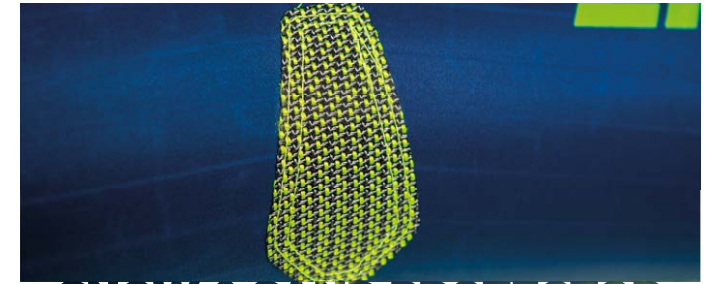
## STRUT JUNCTION

We have completely changed how the strut is connected to the leading edge. The connection is now stronger, cleaner and straighter without unwanted material folds, which cause quicker wear. The whole junction is reinforced with Arptex material for ultimate strength and durability.



## BUILT-IN PUMP LEASH

The Pump Leash is one piece with the central strut reinforcement. Instead of sewing the pump leash on the kite separately, which creates a point of weakness on the leading edge, we opted for creating the pump leash from the central strut reinforcement.



## SNOW & SAND PROTECTOR

The Snow & Sand Protectors on the leading edge protect the kite from damage caused by dragging the kite on snow or land when launching or relaunching the kite.



## SOFT LEADING EDGE END

Towards the end, the leading edge diameter has been optimized and decreases to prevent the bladder slipping out of the kite under pressure. The inside of the leading edge end is lined with a softer version of Arptex to create a cushion for the bladder and prevent any damage to the bladder during a kite crash. On the outside the Leading Edge Ends are protected with Arptex, the latest abrasion resistant polyamide textile from Italy.



## MARCLOTH FUSION LINING

Our engineers use Marcloth to strengthen all areas where the heavy duty kite frame materials meet the lightweight canopy. Marcloth is a mid-weight high strength fabric, ideal to create the ultimate fusion between the higher weight and lighter weight fabrics. All transitions between the frame and canopy are in round shapes, rather than sharp angles and straight lines, as the round shapes spread tension more evenly. Of course, this increases the durability of the kite.



## BACK LINES TUNING

There are three back line settings on the wingtip of the kite. These allow the rider to tune the kite to his or her preferences. The fast back line set up provides the quickest turning of the kite and the lightest bar pressure. On the medium setting the kite still turns relatively quickly and there is more load on the bar. On the slow setting the kite turns noticeably slower and the bar pressure is high.



## CUSTOM COLORS

All 2018 CrazyFly kite colors are custom developed shades supplied exclusively to CrazyFly only.





# SCULP

The 2018 CrazyFly Sculp is a versatile all-around performer, suitable for a wide range of riders and styles. It delivers consistency in all riding disciplines and offers incredible wind range and ease of use.

For 2018, we have re-worked the Sculp, fine-tuned the shape and bridle and exploited new possibilities of producing kites in our own factory in Europe. Shape wise, the Sculp now has high aspect ratio, which makes the kite slimmer and much faster. This also results in a more Delta shape which offers smooth, stable, and predictable flight with progressive power delivery and amazing jumping, boosting and lift.

**ONE WORLD.  
ONE KITE.**



GREEN



RED

AVAILABLE SIZES:

7m / 8m / 9m / 10m / 11m / 12m / 13m / 14m

WAKESTYLE:	<input type="checkbox"/>	<input type="checkbox"/>	<input type="checkbox"/>	<input type="checkbox"/>	<input type="checkbox"/>	<input type="checkbox"/>	<input type="checkbox"/>	<input type="checkbox"/>	
FREESTYLE:	<input type="checkbox"/>	<input type="checkbox"/>	<input type="checkbox"/>	<input type="checkbox"/>	<input type="checkbox"/>	<input type="checkbox"/>	<input type="checkbox"/>	<input type="checkbox"/>	
FREERIDE:	<input type="checkbox"/>	<input type="checkbox"/>	<input type="checkbox"/>	<input type="checkbox"/>	<input type="checkbox"/>	<input type="checkbox"/>	<input type="checkbox"/>	<input type="checkbox"/>	
WAVE:	<input type="checkbox"/>	<input type="checkbox"/>	<input type="checkbox"/>	<input type="checkbox"/>	<input type="checkbox"/>	<input type="checkbox"/>	<input type="checkbox"/>	<input type="checkbox"/>	<input type="checkbox"/>
LIGHTWIND:	<input type="checkbox"/>	<input type="checkbox"/>	<input type="checkbox"/>	<input type="checkbox"/>	<input type="checkbox"/>	<input type="checkbox"/>	<input type="checkbox"/>	<input type="checkbox"/>	<input type="checkbox"/>
PRICE LEVEL:	<input type="checkbox"/>	<input type="checkbox"/>	<input type="checkbox"/>	<input type="checkbox"/>	<input type="checkbox"/>	<input type="checkbox"/>	<input type="checkbox"/>	<input type="checkbox"/>	<input type="checkbox"/>

KITE SELECTOR



FREERIDE / FREESTYLE





# TANGO

The 2018 Tango is a high performance freeride and wave kite for advanced to expert riders. The Tango is a modern open C-shape kite with lots of pull, power and pop. The Tango loves boosting and floaty jumps with amazing hang time. It turns quickly with predictable power and moves exactly where the rider wants it to go. Powered kite loops come with ease, plus the Tango provides amazing upwind abilities.

For 2018, we have re-worked the Tango, fine-tuned the shape and bridle and exploited new possibilities of producing kites in our own factory in Europe. Shape wise, the Tango has short completely squared wingtips and short Linked bridle without pulleys or sliders for ultimate response and direct bar feel.

Brand new and exclusive to CrazyFly, we introduced Triplex, the most advanced ripstop material on the market. Triplex has by far the best strength to weight ratio and with triple coating its durability is unmatched. The coating protects the fabric from UV rays, salt and abrasive objects, such as sand. Triple coating and three ripstop yarns ensure the lowest possible elongation and deterioration of the material till date.

We re-worked the construction and again pushed the limits of strength, rigidity and weight of the kite. With Strategic Dacron placement and Tailored Canopy, we created the most compact kite and the resulting performance is breathtaking.

**ANYTHING YOU WANT.**



AVAILABLE SIZES:  
7m / 9m / 10.5m / 12m

WAKESTYLE:	██████████
FREESTYLE:	██████████
FREERIDE:	██████████
WAVE:	██████████
LIGHTWIND:	██████████
PRICE LEVEL:	██████████

KITE SELECTOR



PERFORMANCE FREERIDE / WAVE





# CRUZE

The 2018 Cruze is a dedicated lightwind kite in our range coming only in 15 and 17m sizes. With a Flat-Delta shape, deep profile, and high aspect ratio, the Cruze generates a lot of power even in marginal wind conditions.

For 2018, we have re-worked the Cruze, fine-tuned the shape and bridle and exploited new possibilities of producing kites in our own factory in Europe. Despite its larger size, the Cruze maintains the agility of a smaller kite thanks to its shape and sturdy construction. The squared wingtips ensure stability as well as quick and precise turning for a kite of this size. To maximize performance in the lightest sea breezes, we stripped down weight wherever possible without sacrificing the rigidity of the kite. Simple bridle and rock solid construction result in a very user friendly light bar feel.

Brand new and exclusive to CrazyFly, we introduced Triplex, the most advanced ripstop material on the market. Triplex has by far the best strength to weight ratio and with triple coating its durability is unmatched. The coating protects the fabric from UV rays, salt and abrasive objects, such as sand. Triple coating and three ripstop yarns ensure the lowest possible elongation and deterioration of the material till date.

**LIGHT WIND MACHINE.**



WAKESTYLE:	<input type="checkbox"/>	<input type="checkbox"/>	<input type="checkbox"/>	<input type="checkbox"/>	<input type="checkbox"/>	<input type="checkbox"/>	<input type="checkbox"/>	<input type="checkbox"/>	
FREESTYLE:	<input type="checkbox"/>	<input type="checkbox"/>	<input type="checkbox"/>	<input type="checkbox"/>	<input type="checkbox"/>	<input type="checkbox"/>	<input type="checkbox"/>	<input type="checkbox"/>	<input type="checkbox"/>
FREERIDE:	<input type="checkbox"/>	<input type="checkbox"/>	<input type="checkbox"/>	<input type="checkbox"/>	<input type="checkbox"/>	<input type="checkbox"/>	<input type="checkbox"/>	<input type="checkbox"/>	<input type="checkbox"/>
WAVE:	<input type="checkbox"/>	<input type="checkbox"/>	<input type="checkbox"/>	<input type="checkbox"/>	<input type="checkbox"/>	<input type="checkbox"/>	<input type="checkbox"/>	<input type="checkbox"/>	<input type="checkbox"/>
LIGHTWIND:	<input type="checkbox"/>	<input type="checkbox"/>	<input type="checkbox"/>	<input type="checkbox"/>	<input type="checkbox"/>	<input type="checkbox"/>	<input type="checkbox"/>	<input type="checkbox"/>	<input type="checkbox"/>
PRICE LEVEL:	<input type="checkbox"/>	<input type="checkbox"/>	<input type="checkbox"/>	<input type="checkbox"/>	<input type="checkbox"/>	<input type="checkbox"/>	<input type="checkbox"/>	<input type="checkbox"/>	<input type="checkbox"/>

AVAILABLE SIZES:  
15m / 17m



KITE SELECTOR

LIGHTWIND



# SICK BAR

Simple and clean.



AVAILABLE SIZES:  
40cm / 45cm / 50cm / 55cm



## TECNO PRESTIGE LEATHER

Sick bar exclusive, it features a brand new premium Italian Tecno Prestige Leather grip from for unmatched comfort and long lasting durability.



## SPINNECT

Brand new Spinnect leash connection below the quick release ensures free spinning movement of the safety line. It provides a much safer and simpler leash to bar connection.



## MARINE SS SMART CLEAT

For easy power adjustments on the go, we introduced a brand new Marine Stainless Steel Smart Cleat. It is strategically placed above the bar, where it is easy to reach.



## PUSH AWAY SAFETY SYSTEM

The safety system has a stainless steel lever mechanism inside, which reduces pressure and makes the safety easy to trigger with low force. Engaging the safety system ensures 100% collapse of the kite in all situations. With the Sick Click feature, the safety system is not only easily triggered, but quickly assembled back together.



## FULL CARBON

Full carbon monocoque one piece bar. Is made from high modulus aerospace carbon fibers which are extremely strong, durable and ultra light. This bar is produced with latest high tech molding processes.



## GERMAN LINES

All CrazyFly lines are top quality low stretch Liros® lines made in Germany. Unlike others, when a CrazyFly line is pulled, the kite reacts instantly. Traditional lines stretch when pulled and the reactions of the kite are slow and require more input from the rider. With CrazyFly lines, steering is direct and requires very light input from the rider. The kite is much easier to control.



# BOARDS





# BOARD SELECTOR



**ADDICT**

**RAPTOR**

**RAPTOR LTD GOLD**

**RAPTOR LTD NEON**

**SHOX GREEN**

**BULLDOZER**

**GIRLS**

**CRUISER**

**CRUISER LW**

**CRUISER DOUBLE**

**ALLROUND**

**SKIM**

**FREESTYLE/  
WAKESTYLE.**

**FREERIDE/  
FREESTYLE.**

**FREERIDE/  
FREESTYLE.**

**FREERIDE/  
FREESTYLE.**

**FREERIDE.**

**FREERIDE/  
FREESTYLE.**

**FREERIDE.**

**LIGHTWIND.**

**LIGHTWIND.**

**FREERIDE.**

**FREERIDE.**

**LIGHTWIND.**

Wakestyle	██████████	██████████	██████████	██████████	██████████	██████████	██████████	██████████	██████████	██████████	██████████	██████████
Freestyle	██████████	██████████	██████████	██████████	██████████	██████████	██████████	██████████	██████████	██████████	██████████	██████████
Freeride	██████████	██████████	██████████	██████████	██████████	██████████	██████████	██████████	██████████	██████████	██████████	██████████
Lightwind	██████████	██████████	██████████	██████████	██████████	██████████	██████████	██████████	██████████	██████████	██████████	██████████
Level of riding	██████████	██████████	██████████	██████████	██████████	██████████	██████████	██████████	██████████	██████████	██████████	██████████
Stiffness	██████████	██████████	██████████	██████████	██████████	██████████	██████████	██████████	██████████	██████████	██████████	██████████
Price level	██████████	██████████	██████████	██████████	██████████	██████████	██████████	██████████	██████████	██████████	██████████	██████████

Flex  
  
 MEDIUM

  
 MEDIUM

  
 MEDIUM

  
 MEDIUM

  
 SOFT

  
 STIFF

  
 SOFT


  
 MEDIUM

  
 SOFT

  
 SOFT

  
 SOFT

  
 SOFT

Bottom Shape  
  
 RIGHT ANGLE CHANNELS

  
 MULTI CHANNEL BOTTOM

  
 ELLIPSE DOUBLE CONCAVE

  
 ELLIPSE DOUBLE CONCAVE

  
 MULTI CHANNEL BOTTOM

  
 TRIPLE CONCAVE TIPS

  
 MULTI CHANNEL BOTTOM

  
 FLATT BOTTOM

  
 FLATT BOTTOM

  
 FLATT BOTTOM

  
 CONCAVE BOTTOM

  
 FLATT BOTTOM

Construction  
  
 CARBON

  
 CARBON

  
 FULL CARBON

  
 FULL CARBON

  
 CARBON

  
 UD KEVLAR

  
 MULTI AXIAL GLASS

  
 FULL CARBON

  
 MULTI AXIAL GLASS

  
 MULTI AXIAL GLASS

  
 MULTI AXIAL GLASS

  
 MULTI AXIAL GLASS





## RIGHT ANGLE CHANNELS

ULTIMATE GRIP.

The four Right Angle Channels on the tips offer ultimate grip for load and pop trick and allow for finless riding. Riding the Addict without fins makes it ideal for hitting kickers and sliders while kiting, or at cable parks.

Addict



## MULTI CHANNEL BOTTOM

MORE UPWIND, DOUBLE COMFORT.

The new Multi Channel Bottom are two separate U concave channels running only in the center section of the board while the tips of the board have a different shape. The Multi Channel Bottom provides great comfort, upwind and the softest possible landings.

Raptor



## ELLIPSE DOUBLE CONCAVE

IMPRESSIVE. IN EVERY SENSE.

The Ellipse Double Concave is a brand new bottom shape developed especially for the Raptor LTD boards. The concaves create an Ellipse like shapes which smoothly transitions into the board tips. The Ellipse Double Concave provides amazing control, grip and upwind drive. At the same time it makes the board much more comfortable and smoother to ride in chop.

Raptor LTD



## TRIPLE CONCAVE TIPS

ULTRA LOAD 'N' POP

This shape of the board's tips provides ultra load 'n' pop. It also gives the board superior grip and makes landings more comfortable.

Bulldozer





# HEXA

The Hexa Binding provides unlimited adjustability to accommodate all foot shapes and sizes, while offering unmatched comfort and board feel.

All the adjustments on the Hexa Binding can be quickly and easily made for the ultimate rider-board connection. The Hexa footpad can be moved in six directions: up and down, left and right, and also angled clockwise and counter clockwise. The Hexa footstrap offers a wide range of adjustments of the footstrap size, which can be easily and quickly made. It can be adjusted on four points for the best possible fit. The range of adjustability also allows for comfortable use of neoprene boots. The footstrap position can also be adjusted via the Quattro Stix, which allow the footstrap to be moved towards the heel or towards the toes. In addition to all the adjustments, there is also a Heel Suspension Infix with triple density EVA foam.

Our designers were hard at work to create the best possible ergonomic fit and hand picked premium materials for long lasting durability and luxurious comfort. The outdoor performance leather from Italy on Hexa footstraps is extremely resistant to abrasion, sun rays and salt water. On top of premium materials, the Hexa Binding is made in Europe, in the CrazyFly factory.

The Hexa Binding - unlimited adjustments and luxurious comfort.

  
Unlimited adjustability.







# ADDICT

Uncompromised, modern and eye-catching. The Addict is a board that truly stands out on and off the water. It is a freestyle wakestyle crossover board for advanced to expert riders.

The Addict is designed and constructed to push the limits. Right Angle Channels on the tips and Edge Control Track provide plenty of grip. Riding the Addict without fins makes it ideal for hitting kickers and sliders while kiting, or at cable parks. The board is equipped with 3.0 cm Razor fins for the ultimate grip if required.

Construction is rock solid and can take plenty of abuse. The X carbon, Kevlar, and optimized flex provide explosive pop while the larger rocker makes landings incredibly smooth. Light Up sidewalls are stronger and lighter than ever with an attractive color changing look.

The Addict has a flat deck and works best with wake bindings. It is also compatible with Hexa Bindings.

The Addict is an absolute top class freestyle wakestyle crossover and simply an amazing board to ride.

**IT'S ADDICTIVE.**



AVAILABLE SIZES:  
136 x 41 / 139 x 42 / 142 x 43

WAKESTYLE:	██████████
FREESTYLE:	██████████
FREERIDE:	██████████
LIGHTWIND:	██████████
LEVEL OF RIDING:	██████████
STIFFNESS:	██████████
PRICE LEVEL:	██████████

BOARD SELECTOR



FREESTYLE / WAKESTYLE



# RAPTOR

After eleven years of proven performance, the legend in our range continues to impress and wears a crown of our best selling board.

The Raptor is a freeride freestyle high performance board for intermediate to advanced rider level, it will bring never before experienced ride feelings. Thanks to a Multi Channel bottom shape and V tips, the Raptor has the perfect balance between speed and grip. The Step Cap deck technology allows for thinner rails for ultimate edging and amazing upwind.

CrazyFly exclusive and latest in tech, the Nano Glide Skin on the bottom of the board helps the board track and go upwind better thanks to its micro channels. The Nano Glide skin foil has better gliding properties and generates speed quicker, plus it is more resistant to scratches. The top of the board has a brand new matt overprint for that eye catching premium look.

Raptor's construction layup combines multi axial fiberglass and brand new X carbon. This construction is a little bit softer than the previous Raptor boards, making it more comfortable. The X carbon provides for plenty of pop to pull off tricks. Light Up sidewalls are stronger and lighter than ever with an attractive color changing look.

The Raptor works best with Hexa Bindings for unmatched comfort and board feel.

**EXPERIENCE FUTURE NOW.**



AVAILABLE SIZES:  
132 x 41 / 135 x 41 / 135 x 43  
137 x 41 / 137 x 43 / 140 x 42

WAKESTYLE:	■■■■■■■■■■
FREESTYLE:	■■■■■■■■■■
LIGHTWIND:	■■■■■■■■■■
LEVEL OF RIDING:	■■■■■■■■■■
STIFFNESS:	■■■■■■■■■■
PRICE LEVEL:	■■■■■■■■■■

BOARD SELECTOR



FREERIDE / FREESTYLE





# RAPTOR LTD

Our full carbon top model received a brand new shape after seven years. When you make a good very good shape, it is hard to make a better one and we spent three years working on the new Raptor LTD. The 2018 Raptor LTD also comes in a brand new Neon version for customers who prefer better visibility of the board in dark water.

Sticking to its core properties of a high end freeride/freestyle board, it remains a full carbon, ultra light masterpiece. The 2018 Raptor LTD features a brand new Ellipse double concave shape in the center of the bottom for unmatched comfort and Double V tips for better grip when popping. Buttery soft in chop, yet dynamic for high end freeride and freestyle. Brand new CompFlex 4T5 Carbon on the bottom of the board makes the new LTD even more comfortable and smoother, especially in choppy water. Latest in the Carbon tech world, the CompFlex 4T5 has a brand new weave which provides much more flex without sacrificing the strength. Plus the new weave is thinner and requires less epoxy resulting in 0,1 kg weight saving per board.

CrazyFly exclusive and latest in tech, the Nano Glide Skin on the bottom of the board helps the board track and go upwind better thanks to its micro channels. The Nano Glide skin foil has better gliding properties and generates speed quicker, plus it is more resistant to scratches. The top of the board has a brand new matt overprint for that eye catching premium look.

The Raptor LTD works best with Hexa LTD Bindings for unmatched comfort and board feel.

## THE LEGEND REBORN.



AVAILABLE SIZES:  
132 x 41 / 136 x 41 / 140 x 42

WAKESTYLE:	▬▬▬▬▬▬▬▬▬▬
FREESTYLE:	▬▬▬▬▬▬▬▬▬▬
FREERIDE:	▬▬▬▬▬▬▬▬▬▬
LIGHTWIND:	▬▬▬▬▬▬▬▬▬▬
LEVEL OF RIDING:	▬▬▬▬▬▬▬▬▬▬
STIFFNESS:	▬▬▬▬▬▬▬▬▬▬
PRICE LEVEL:	▬▬▬▬▬▬▬▬▬▬

BOARD SELECTOR



FREERIDE / FREESTYLE





# RAPTOR LTD NEON

A brand new bright and fresh addition to our board range, we are proud to introduce the Raptor LTD Neon. It has exactly the same great shape and full carbon construction as the regular Raptor LTD, but the Neon has bright colors to make it more visible in dark waters. This comes especially handy for riders who progress and often body drag back to the board after crashing.

Sticking to its core properties of a high end freeride/freestyle board, it remains a full carbon, ultra light masterpiece. The 2018 Raptor LTD Neon features a brand new Ellipse double concave shape in the center of the bottom for unmatched comfort and Double V tips for better grip when popping. Buttery soft in chop, yet dynamic for high end freeride and freestyle. Brand new CompFlex 4T5 Carbon on the bottom of the board makes the new LTD Neon even more comfortable and smoother, especially in choppy water. Latest in the Carbon tech world, the CompFlex 4T5 has a brand new weave which provides much more flex without sacrificing the strength. Plus the new weave is thinner and requires less epoxy resulting in 0,1 kg weight saving per board.

CrazyFly exclusive and latest in tech, the Nano Glide Skin on the bottom of the board helps the board track and go upwind better thanks to its micro channels. The Nano Glide skin foil has better gliding properties and generates speed quicker, plus it is more resistant to scratches. The top of the board has a brand new matt overprint for that eye catching premium look.

The Raptor LTD Neon works best with Hexa LTD Neon Bindings for unmatched comfort and board feel.

**NEW ERA OF A LEGEND.**



AVAILABLE SIZES:  
132 x 41 / 136 x 41 / 140 x 42

WAKESTYLE:	██████████
FREESTYLE:	██████████
FREERIDE:	██████████
LIGHTWIND:	██████████
LEVEL OF RIDING:	██████████
STIFFNESS:	██████████
PRICE LEVEL:	██████████

BOARD SELECTOR



*FREERIDE / FREESTYLE*



# SHOX

The 2018 Shox is the ultimate upwind machine and the most comfortable freeride board in our range for intermediate to advanced riders.

We are extremely proud to offer the most environmentally friendly kiteboard. With help from our supplier, new technologies, and new machinery, we are able to produce the Shox edition kiteboard with almost zero waste in production.

The Shox takes advantage of Multi Channel bottom shape and Concave Tips which provide unmatched upwind performance and increase the overall all-round abilities of the board. Step Cap deck technology allows for thinner rails and sharper edging. The construction layup combines Recycled fiberglass and X carbon on the deck for a dynamic feel and optimized pop.

The environmental aspect of this board, did not sacrifice anything in terms of performance on the water. The Shox works a treat! Full wood core and the Multi Channel Bottom shape make up for the most comfortable freeride and top notch upwind performance.

This board works best with Hexa Bindings for unmatched comfort and board feel.

## ULTIMATE FREERIDE COMFORT.



AVAILABLE SIZES:  
132 x 41 / 136 x 41 / 140 x 42

WAKESTYLE:	■■■■■■■■■■
FREESTYLE:	■■■■■■■■■■
LIGHTWIND:	■■■■■■■■■■
LEVEL OF RIDING:	■■■■■■■■■■
STIFFNESS:	■■■■■■■■■■
PRICE LEVEL:	■■■■■■■■■■

BOARD SELECTOR



FREERIDE





# BULLDOZER

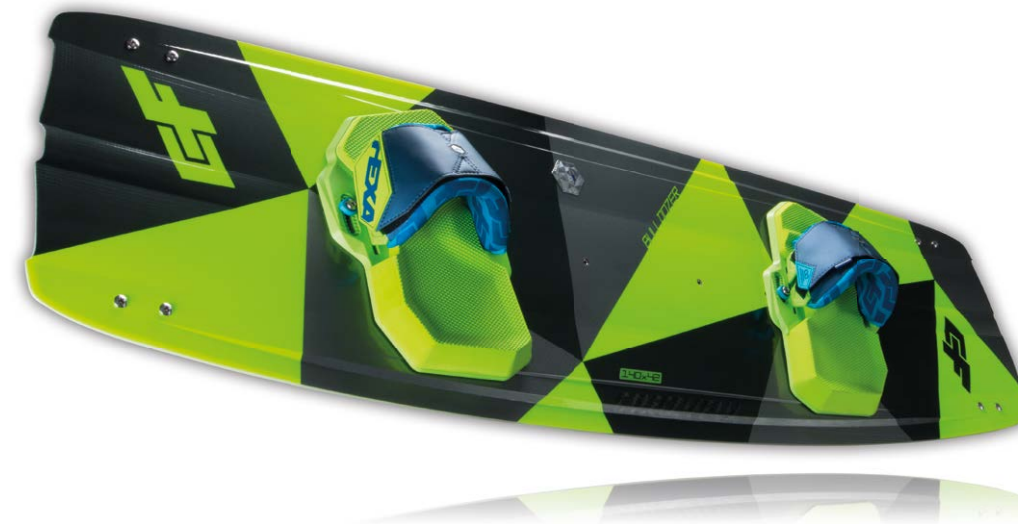
The 2018 Bulldozer received a complete makeover including a brand new shape and tweaked layup. It continues to sit in the freestyle/wakestyle crossover aimed at intermediate to advanced riders who like to ride aggressively. The Bulldozer is a great choice for riding with wake bindings.

This board is shaped and constructed to be pushed hard, and it delivers amazing power on the water. The brand new shape features a deep center concave for added comfort and smoother feel. Along the center concave, we created two split V channels for more grip and better upwind tracking. They also play a big part for load 'n' pop trick which are also supported by triple concave tips. The Bulldozer continues to be the fastest board in our range, so you can really transfer all the speed into your jumps and boosts. If you like to push the gas pedal, the Bulldozer is definitely the right choice.

We have reinforced the Bulldozer's construction with Uni-directional Kevlar throughout the whole length of the board. Kevlar is a high strength and low weight composite and is used in military and space industries. Plus, we added a Spread Tow Carbon reinforcement in the center of the board to increase the board dynamics and pop. Aside from the Kevlar and Carbon, the Bulldozer also makes use of Multi-axial Fiber Glass. This construction provides a breathtaking amount of pop without making the board too stiff.

The Bulldozer is compatible and works great with both Hexa Bindings and wake bindings. The board is equipped with brand new 3.0 cm Razor fins for the ultimate grip if required.

## NEXT GENERATION.



AVAILABLE SIZES:  
135 x 41 / 140 x 42 / 143 x 43

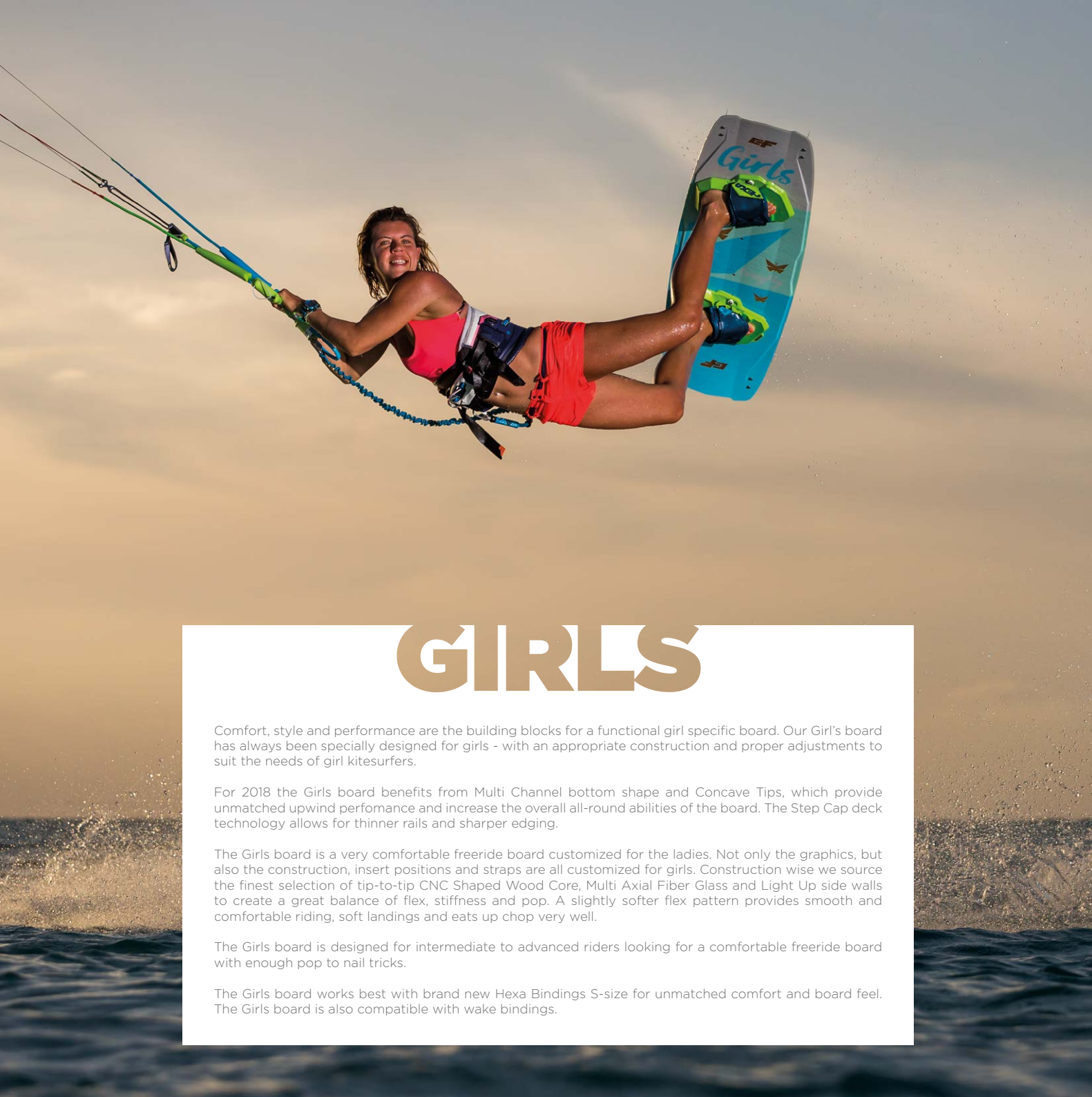
WAKESTYLE:	██████████
FREESTYLE:	██████████
FREERIDE:	██████████
LIGHTWIND:	██████████
LEVEL OF RIDING:	██████████
STIFFNESS:	██████████
PRICE LEVEL:	██████████

BOARD SELECTOR



FREERIDE / FREESTYLE





# GIRLS

Comfort, style and performance are the building blocks for a functional girl specific board. Our Girl's board has always been specially designed for girls - with an appropriate construction and proper adjustments to suit the needs of girl kitesurfers.

For 2018 the Girls board benefits from Multi Channel bottom shape and Concave Tips, which provide unmatched upwind performance and increase the overall all-round abilities of the board. The Step Cap deck technology allows for thinner rails and sharper edging.

The Girls board is a very comfortable freeride board customized for the ladies. Not only the graphics, but also the construction, insert positions and straps are all customized for girls. Construction wise we source the finest selection of tip-to-tip CNC Shaped Wood Core, Multi Axial Fiber Glass and Light Up side walls to create a great balance of flex, stiffness and pop. A slightly softer flex pattern provides smooth and comfortable riding, soft landings and eats up chop very well.

The Girls board is designed for intermediate to advanced riders looking for a comfortable freeride board with enough pop to nail tricks.

The Girls board works best with brand new Hexa Bindings S-size for unmatched comfort and board feel. The Girls board is also compatible with wake bindings.

*THIS IS LOVE.*



AVAILABLE SIZES:  
132 x 41 / 135 x 41

WAKESTYLE:	██████████
FREESTYLE:	██████████
FREERIDE:	██████████
LIGHTWIND:	██████████
LEVEL OF RIDING:	██████████
STIFFNESS:	██████████
PRICE LEVEL:	██████████

BOARD SELECTOR

-  SOFT
-  MULTI CHANNEL BOTTOM
-  CONCAVE TIP
-  PRO FLEX
-  GREAT POP
-  MULTI AXIAL GLASS
-  CNC SHAPED WOOD CORE
-  LIGHT UP SIDEWALLS
-  RAZOR FINE
-  HEXA BINDING
-  WAKE BINDING COMPATIBLE

FREERIDE





# CRUISER

Cruiser is a light wind machine with proven shape and construction. The name sums it up perfectly: Cruising around, having fun and enjoying the ride even in the lightest winds. But of course, this board can handle a lot more than that... Due to its unique core construction and extremely light layers of carbon, the Cruiser can also be seriously abused. The very well balanced medium flex of this board suits intermediate and advanced riders, it rides comfortably in choppy waters and the flat rocker and squared outline ensure that it is an incredible lightwind board.

The **Cruiser** has the lightest and strongest wood core in our entire range, which is reinforced with carbon ensuring that the board is very light - even in the bigger sizes.

**Cruiser LW** has asymmetric fins position. The fins are positioned on the heel edge of the tips and in the center of the tips. Due to the asymmetric fin position, the fins stay in the water all the time and provide better upwind ability of the Cruiser LW.

**Cruiser Double** features inserts positions for two sets of bindings. As the name suggests, the Cruiser Double can take two riders on board at the same time. A great tool for introducing newcomers to kiteboarding and for sharing our beautiful sport.

## LIGHT WIND MACHINE.



**CRUISER**

AVAILABLE SIZES:  
145 x 44  
145 x 48



**CRUISER LW**

AVAILABLE SIZES:  
154 x 44  
160 x 48



**CRUISER DOUBLE**

AVAILABLE SIZE:  
154 x 44

WAKESTYLE:	██████████
FREESTYLE:	██████████
FREERIDE:	██████████
LIGHTWIND:	██████████
LEVEL OF RIDING:	██████████
STIFFNESS:	██████████
PRICE LEVEL:	██████████

BOARD SELECTOR



LIGHTWIND







# FULL CARBON FOILS

Prepreg Autoclave construction.

We are pleased to introduce a brand new foil products range. Of course, all foil products are produced in Europe.

The foils are made with the most advanced composite technology - prepreg Autoclave. Prepreg carbon fiber composites always have the perfect ratio of resin spread evenly and create the best molecular bonding. Prepreg composite lamination is a dry process, as prepreg carbon fiber composites are stored cold. Then they are CNC knife cut and hand placed into the mold. The Autoclave ensures correct pressure and heat are applied for a very specific time frame. This results in by far the best strength to weight ratio which is essential for high performance foils.

When designing our foils, we also thought about travel and storage convenience, so our mounting system is very simple and quick to assemble and take apart. Both foil boards are taking advantage of carbon fiber. While the F-lite is a full carbon ultra-light board, the Chill board has a carbon fiber stringer. When it comes to foiling, carbon is by far the most superior material for transferring energy in the fastest and most dynamic way, resulting in unmatched foiling experience.







# FOILS





# MASTER

Freerace.



AVAILABLE SIZES:

Mast: 96 cm

Front wing: 600 cm<sup>2</sup>

Master is a high performance freerace foil aimed at intermediate to advanced riders. It offers high top speed, incredible upwind drive and superior stability. Smaller 600 squared centimeter surface area and high aspect ratio of the front wing create extremely low water resistance for fast acceleration and high speed. Advanced riders will appreciate the speed of this foil for boosting even higher jumps. Riders looking to progress into foil racing will find themselves at home on the Master.

# UP

Freeride.



AVAILABLE SIZES:

Mast: 96 cm

Front wing: 700 cm<sup>2</sup>

Up is a full carbon allround freeride foil suitable for intermediate to advanced riders. It offers high maneuverability, medium top speed and great stability. Plus the larger 700 squared centimeter surface area and hydrodynamic shape of the front wing push up at low speed. It is easy to get up and fun to cruise. The larger front wing makes up for a smooth ride and is easy to ride strapless. More advanced riders will appreciate the larger front wing when landing their first jumps, as it is more much stable and easier to get back up on the foil than the smaller front wings.

# F-LITE

Ultra small flight deck.



AVAILABLE SIZES:

115 x 44

F-lite is a feather light full carbon, ultra-small low volume foil board suitable for intermediate to advanced riders. It is a high performance easy to ride board with a full diamond grip deck footpad and concave deck for easy maneuvering during gybes. Riders who already know how to foil will appreciate its small size, low weight and dynamic transfers of energy into the foil. It features a high nose and speed rocker to generate speed quickly and get you up on the foil in no time. Packed with lots of performance, this board is also a great travel companion, plus it delivers great fun and amazing performance on the water.

# CHILL

Allround foiling fun.



AVAILABLE SIZES:

130 x 46

Chill is an easy to ride low volume allround foil board suitable for beginners and intermediate riders. With its compact size high nose and speed rocker, it provides good surface area for early planning and will get you up on the foil in no time. Concave deck provides easy handling of the board while the full deck footpad comes in handy for traction and safety during wipeouts. The Chill has a fiberglass layup with a central carbon fiber stringer to increase the dynamics of transferring energy into the foil. Packed with all great features, who needs more to go foiling and Chill.



# SURFBOARDS MADE IN EU

High quality handmade boards.

Another big step this last year was moving the surfboard production from Asia to Europe. This factory has all the right ingredients for producing top notch surfboards.

With the latest 3D shaping machine, premium PU blanks and European fiberglass and resin, we were able to reduce weight, increase flex while the boards remain extremely durable. All the 2018 boards are 3D shaped and hand finished with traditional surfboard production process. This results in superior surfboard feel and optimized flex for comfortable ride. Everything is backed up with highly skilled and experienced workforce with eyes on every small detail during production.

No wonder, the 2018 surfboards are the best we have made so far.

## ATV

All terrain vehicle.



AVAILABLE SIZES:

5'10" x 19"

6'0" x 19 1/8"

The All Terrain Vehicle is the most versatile board in our range. The ATV was designed and developed with Tommy Gaunt, who has been shredding waves all over Australia, Antigua, Cornwall and Scotland, so the board handles a large variety of conditions ranging from small to big waves. With a medium rocker, the ATV planes early and generates speed. Even at high speed, the board has plenty of grip and is easy to handle. This makes it the best choice for riders looking to get into the kitesurfing discipline.

For 2018, the ATV continues with an ultra light PU core and Polyurethane resin construction, all made with the highest quality materials in Europe. The ultra light construction is as close to a proper surfboard as a kitesurfboard can get. There is no bamboo reinforcement, so the ATV offers amazing flex and a real smooth surf feel. It is very forgiving and comfortable to ride. Under back foot heels, we use carbon fiber reinforcements, so the tail can hold a lot of pressure. Overall the new ATV is lighter, durable, more flexible and overall a lot nicer to ride.

## STRIKE

Strength and power.



AVAILABLE SIZES:

5'4" x 18 1/2"

5'6" x 18 1/2"

The Strike delivers maximum performance in small to medium surf and works great for strapless freestyle tricks. It features a cut off nose shape for powered snappy turning and straighter outline for more control in the chop. This outline allows the Strike to have as much volume as regular surfboard shapes, even with the cut off nose. The volume of the board is more centered under the rider's feet and provides easier and more precise control. With a wider center, straighter outline and cut off nose, the Strike is extremely easy to ride.

For 2018, the Strike is made in Europe and features a brand new ultra light construction combining a PU core and Polyurethane resin. The new ultra light construction is as close to a proper surfboard as a kitesurfboard can get. There is no bamboo reinforcement, so the Strike now offers amazing flex and a real smooth surf feel. If you are looking for an easy to ride dynamic board for small to medium surf and some strapless airs, the Strike is the right choice.



# APPAREL





# TRAVEL BAGS





# PRODUCT GUIDE

## SCULP

Green



7m 8m 9m 10m 11m 12m 13m 14m

## SCULP

Red



7m 8m 9m 10m 11m 12m 13m 14m

## TANGO

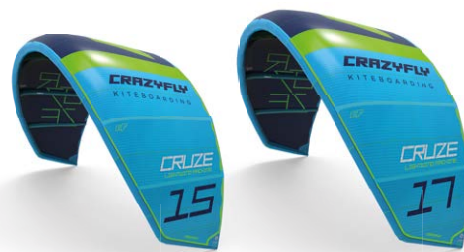
Green



7m 9m 10.5m 12m

## CRUZE

Blue



15m 17m

## SICK BAR



40 cm 45 cm 50 cm 55 cm

## BINDINGS



Hexa Hexa LTD Hexa LTD Neon Allround

## RAPTOR LTD



132x41 136x41 140x42

## RAPTOR LTD NEON



132x41 136x41 140x42

## RAPTOR



132x41 135x41 135x43 137x41 137x43 140x42

## ADDICT



136x41 139x42 142x43

## SHOX



132x41 136x41 140x42

## BULLDOZER



135x41 140x42 143x43

## GIRLS



132x41 135x41

## CRUISER



145x44 145x48

## CRUISER LW



154x44 160x44

## CRUISER DOUBLE



154x44

## ALLROUND



135x40 138x40 138x43 145x42 145x44 145x48

## MASTER



96 cm 600 cm<sup>2</sup>

## UP



96 cm 700 cm<sup>2</sup>

## F-LITE



115x44

## CHILL



130x46

## ATV CUSTOM



5'10" 6'0"

## STRIKE



5'4" 5'6"

## SKIM



135x48



# DISTRIBUTORS

## ANTIGUA AND BARBUDA

40 Knots  
tel: 001 268 788 9504  
40@40knots.net

## ARGENTINA

Escuela Argentina de Kitesurf  
tel: 0054 911 657 59624  
crazyflyargentina@gmail.com

## ARUBA

Pro Kite School Aruba  
tel: 00297 740 2193  
pechi.sk8@post.cz

## AUSTRALIA

List of dealers on:  
[www.crazyflykites.com](http://www.crazyflykites.com)

## AUSTRIA

List of dealers on:  
[www.crazyflykites.com](http://www.crazyflykites.com)

## BELGIUM

List of dealers on:  
[www.crazyflykites.com](http://www.crazyflykites.com)

## BELIZE

KiteXplorer  
tel: 0050 163 54 967  
info@kitexplorer.com

## BRASIL

List of dealers on:  
[www.crazyflykites.com](http://www.crazyflykites.com)

## BRITISH VIRGIN ISLANDS

List of dealers on:  
[www.crazyflykites.com](http://www.crazyflykites.com)

## BULGARIA

Bars Ltd., Nikolay Dimitrov  
tel: 00359 888 505 640  
tarfa@mail.bg

## CANADA

PKSdistribution.com  
tel: 001 361 883 1473  
info@pkdistribution.com

## CANARY ISLANDS

List of dealers on:  
[www.crazyflykites.com](http://www.crazyflykites.com)

## COLOMBIA

List of dealers on:  
[www.crazyflykites.com](http://www.crazyflykites.com)

## COSTA RICA

Kiteboarding Costa Rica  
tel: 011 506 267 610 45  
kitecostarica@hotmail.com

## CYPRUS

Griffes Kiteflex Ltd - Kitesurfing  
Cyprus  
tel: 00357 99 618448  
info@kitesurfingcyprus.com

## CZECH REPUBLIC

Best Kites s.r.o.  
tel: 00420 608 889 719  
kites@kites.cz

## CROATIA

List of dealers on:  
[www.crazyflykites.com](http://www.crazyflykites.com)

## DENMARK

List of dealers on:  
[www.crazyflykites.com](http://www.crazyflykites.com)

## DOMINICAN REPUBLIC

List of dealers on:  
[www.crazyflykites.com](http://www.crazyflykites.com)

## EGYPT

List of dealers on:  
[www.crazyflykites.com](http://www.crazyflykites.com)

## ESTONIA

Laulasmaa Surfiklubi / Martti Ainola  
tel: +372 5648 7666  
xtremkite@gmail.com

## FINLAND

List of dealers on:  
[www.crazyflykites.com](http://www.crazyflykites.com)

## FRANCE

List of dealers on:  
[www.crazyflykites.com](http://www.crazyflykites.com)

## GERMANY

List of dealers on:  
[www.crazyflykites.com](http://www.crazyflykites.com)

## GREECE

Bit Of Salt  
tel: 0030 228 404 2757  
bitosalt@otenet.gr

## GUADELOUPE

Turkoise Kites Cool  
tel: 00590 690 431 551  
tkcool@wanadoo.fr

## HUNGARY

List of dealers on:  
[www.crazyflykites.com](http://www.crazyflykites.com)

## CHILE

Side On  
tel: 0056 998 212 278  
info@sideon.cl

## INDONESIA

Seabreeze Kite Club  
tel: 0062 821 6670 5499  
info.seabreezekiteclub@gmail.com

## IRAN

Samann Sair Kish  
tel: 0098 912 302 8848  
firoozimo@gmail.com

## IRELAND

List of dealers on:  
[www.crazyflykites.com](http://www.crazyflykites.com)

## ISRAEL

KiteStore  
tel: 009725 463 07 106  
info@kitestore.co.il

## ITALY

List of dealers on:  
[www.crazyflykites.com](http://www.crazyflykites.com)

## JAPAN

Powerzone  
tel: 0081 87 833 3306  
info@powerzonekite.com

## KAZAKHSTAN

List of dealers on:  
[www.crazyflykites.com](http://www.crazyflykites.com)

## KENYA

List of dealers on:  
[www.crazyflykites.com](http://www.crazyflykites.com)

## KYRGYZSTAN

Arthur Siuleev  
tel: 00996 777 960 034  
arthur.siuleev@yahoo.com

## LATVIA

BOARDSIDE.LV  
tel: 00371 2 94 100 89  
raimonds@boardside.lv

## LITHUANIA

UAB Xpro Grupe  
tel: 00370 686 339 93  
darius@xpro.lt

## MADAGASCAR

Yan Nautic Club  
tel: 00261 20 94 90 692  
filiuyan69@yahoo.fr

## MALDIVES

Boards N Sports  
tel: 00960 778 15 85  
info@boardsnsports.com

## MEXICO

PKSdistribution.com  
tel: 001 361 883 1473  
info@pkdistribution.com

## MOLDOVA

Gals.md  
tel: 00373 690 101 01  
info@gals.md

## MOZAMBIQUE

List of dealers on:  
[www.crazyflykites.com](http://www.crazyflykites.com)

## NETHERLANDS

List of dealers on:  
[www.crazyflykites.com](http://www.crazyflykites.com)

## NETHERLANDS ANTILLES

Kiteboarding Bonaire  
tel: 00599 786 6138  
info@kiteboardingbonaire.com

## NEW CALEDONIA

List of dealers on:  
[www.crazyflykites.com](http://www.crazyflykites.com)

## NEW ZEALAND

List of dealers on:  
[www.crazyflykites.com](http://www.crazyflykites.com)

## NORWAY

Surfbutikkken  
tel: 0047 48 144 542  
surf@surfbutikkken.no

## PANAMA

Machete Kites  
tel: 00507 667 477 72  
info@machetekites.com

## PHILIPPINES

Bolabog beach kiteboarding  
tel: 0063 917 335 8819

## POLAND

List of dealers on:  
[www.crazyflykites.com](http://www.crazyflykites.com)

## PORTUGAL

List of dealers on:  
[www.crazyflykites.com](http://www.crazyflykites.com)

## ROMANIA

H2O Sports  
tel: 00407 22 30 23 25  
itache@h2o.ro

## RUSSIA

Vladimir Kutsenko  
tel: 00372 627 5880  
vladimir@flysurfer.ee

## SEYCHELLES

Hermann Holst  
tel: 00248 526 187  
hermann@visioncare-sey.com

## SINGAPORE

Kitoons Asia  
tel: 0065 93 851 331  
info@kitoons.asia

## SLOVAKIA

Crazy Fly s.r.o.  
tel: 00421 32 743 42 72  
info@crazyflykites.com

## SLOVENIA

List of dealers on:  
[www.crazyflykites.com](http://www.crazyflykites.com)

## SOUTH AFRICA

Surfers Ballito Bay  
tel: 0027 329 46 0018  
candice@surferssa.co.za

## SOUTH KOREA

Kihwan Kwon  
tel: 0082 51 207 3700  
kihwankwon@hotmail.com

## SPAIN

List of dealers on:  
[www.crazyflykites.com](http://www.crazyflykites.com)

## SWEDEN

List of dealers on:  
[www.crazyflykites.com](http://www.crazyflykites.com)

## SWITZERLAND

List of dealers on:  
[www.crazyflykites.com](http://www.crazyflykites.com)

## TAHITI

List of dealers on:  
[www.crazyflykites.com](http://www.crazyflykites.com)

## TAIWAN

Delitone Enterprises  
tel: 04-25685607  
andy@myfavorshopping.com

## THAILAND

Kitesurf Thailand  
tel: 0066 89 529 2050  
dave@kitesurfthailand.com

## TUNISIA

Globalkite  
tel: 00216 97 270 931  
info@globalkite.com

## TURKS AND CAICOS

Kite Provo  
tel: 001 649 242 2927  
info@kiteprovo.com

## TURKEY

Ozone Sports and Aviation  
tel: 00902 32 463 34 69  
info@ozonehobby.com

## UKRAINE

Yura Manuylov  
tel: 00380 674 860 486  
manuylov@ukr.net

## UNITED ARAB EMIRATES

List of dealers on:  
[www.crazyflykites.com](http://www.crazyflykites.com)

## UNITED KINGDOM

List of dealers on:  
[www.crazyflykites.com](http://www.crazyflykites.com)

## URUGUAY

Darwind  
tel: 00598 94 410551  
info@dar-wind.com.uy

## USA

PKSdistribution.com  
tel: 001 361 883 1473  
info@pkdistribution.com

## VENEZUELA

List of dealers on:  
[www.crazyflykites.com](http://www.crazyflykites.com)

 **KB BY BUYING THESE PRODUCTS  
CH YOU SUPPORT CHILDREN.**

[kiteboardingforchildren.com](http://kiteboardingforchildren.com)



**REGISTER  
YOUR GEAR**

[crazyflykites.com/register](http://crazyflykites.com/register)



**2 YEARS EXTENDED  
WARRANTY**

[crazyflykites.com/extend](http://crazyflykites.com/extend)