

DISTRIBUTORS



ARUBA

Kitesurfing Aruba
tel: 00297 733 15 15
kitesurfingaruba@hotmail.com

AUSTRALIA

Sunshine Products
tel: 0061 7 54919645
windsurf@bigpond.com.au

AUSTRIA

List of dealers on:
www.crazy-fly.com

BALEARIC ISLANDS

Pipeline Surf Shop
tel: 0034 971 74 55 58
info@malloreapipeline.com

BELGIUM

List of dealers on:
www.crazy-fly.com

BRAZIL

Vandals
tel: 0055 21 2491 4751
poli@vandals.com.br

BULGARIA

Bars Ltd., Nikolay Dimitrov
tel: 00359 888 505 640
tarfa@mail.bg

CABO VERDE

Surf Zone - Cabo Verde
tel: 00238 9978 804
rodriodman@gmail.com

CANADA

Prokitesurf / Precision Kites
tel: 001 361 883 1473
info@prokitesurf.com

CROATIA

AB original surf shop
tel: 00385 98 232 677
surfmania@surfmania.net

CYPRUS

Griffes Com Ltd - Kitesurfing Cyprus
tel: 00357 99 618448
griffesco@yahoo.com

CZECH REPUBLIC

Backside
tel: 00420 604 269 820
honza@bestkiteboarding.cz

DENMARK

Kitedanmark
tel: 0045 60 62 51 51
info@kitedanmark.dk

DOMINICAN REPUBLIC

Kite Club Cabarete
tel: 001 809 571 97 48
info@kiteclubcabarete.com

ESTONIA

Sensoline OÜ
tel: 00372 6 033 000
kalev@kitezone.ee

EGYPT

List of dealers on:
www.crazy-fly.com

FINLAND

Kitetirri Tmi
tel: 00358 40 540 4513
kitetirri@gmail.com

FRANCE

List of dealers on:
www.crazy-fly.com

GERMANY

List of dealers on:
www.crazy-fly.com

GREECE

Bit Of Salt
tel: 0030 228 4042 757
bitosalt@otenet.gr

GUAM

Gravity
tel: 00671 787 0800
gravityguam@gmail.com

HONGKONG

Kitesurf4ever
tel: 00852 6890 8101
kiteboarding4ever@yahoo.com

HUNGARY

Surfstation
tel: 0036 30 9579 299
info@surfstation.hu

CHILE

Backside
tel: 0056 9 9436 5582
www.backside.cl

INDONESIA

Bali Kite Center
tel: 0062 81 33 87 33333
mika@balkitecenter.com

IRELAND

Zumo Surf
tel: 00353 862 257 434
gary@zumosurf.com

ISRAEL

Yehonatan Naim
tel: 00972 546 307 106
yehonatan_naim@yahoo.com

ITALY

List of dealers on:
www.crazy-fly.com

JAPAN

Taimeiken Kite Museum
Hiro Modegi
tel: 0081 3 3271 2477
hiro_m@taimeiken.co.jp

KAZAKHSTAN

List of dealers on:
www.crazy-fly.com

LATVIA

DDE
tel: 00371 912 6497
reimis@dde.lv

LITHUANIA

X-PRO Water Sports
tel: 00370 686 33993
info@xpro.lt

MAURITIUS

Yoaneye
tel: 00 230 7378296
info@yoaneye.com

MEXICO

Prokitesurf / Precision Kites
tel: 001 361 883 1473
info@prokitesurf.com

NAMIBIA

Walvis Bay Wind - Kitesurf Centre cc
tel: 00 264 81 37 39 402
jibemann.namibia@qmx.de

NETHERLANDS

List of dealers on:
www.crazy-fly.com

NETHERLANDS ANTILLES

Bali Kite Center
tel: 00599 786 6138
info@kiteboardingbonaire.com

NEW CALEDONIA

Point Kite
tel: 00687 86 16 80
c.foussard@gmail.com

NEW ZEALAND

Anabatic Kiteboarding
tel: 0064 988 98 001
lee@anabatic.co.nz

NORWAY

Sideshore
tel: 0047 982 24 624
lars@sideshore.no

PANAMA

Machete Kites
tel: 00507 227 0806
itzick@cablonda.net

PHILIPPINES

Islakite
tel: 0063 36 288 5352
info@islakite.com

POLAND

List of dealers on:
www.crazy-fly.com

PORTUGAL

List of dealers on:
www.crazy-fly.com

QATAR

Qatar Kiteboarding
tel: 00974 5900 300
tloomne@hotmail.com

ROMANIA

SC H2O Sports International SRL
tel: 0040 722 302 325
itache@h2o.ro

RUSSIA

Vladimir Kutsenko
tel: 00372 6 275 880
vladimirkutsenko@gmail.com

SAIPAN

Ride on Saipan, Dan Westphal
tel: 670 233 9378
rideonsaipan@yahoo.com

SINGAPORE

Kitons Asia, Thorsten H. Tripp
tel: 0065 9365 1331
info@kitoons.asia

SLOVAKIA

Crazy Fly s.r.o.
tel: 00421 32 743 42 72
info@crazy-fly.com

SLOVENIA

List of dealers on:
www.crazy-fly.com

SOUTH AFRICA

Surfers Ballito Bay
tel: 0027 32 946 0018
info@kitesurfers.co.za

SOUTH KOREA

Ki Hwan Kwon
tel: 0082 51 207 3700
kihwankwon@hotmail.com

SPAIN

Windsurfer's Paradise
tel: 0034 937 510 320
info@windparadise.com

SWEDEN

List of dealers on:
www.crazy-fly.com

SWITZERLAND

Freestyle - Shop
tel: 0041 34 422 2101
info@freestyle-shop.ch

TAHITI

Moanareva
tel: 00689 72 11 72
moanareva@mail.pf

THAILAND

Kitesurf Thailand
tel: 0066 89 529 2050
willy@kitesurthailand.com

TRINIDAD AND TOBAGO

Performance Distributors Ltd.
tel: 001 868 290 50 87
federalautocare@yahoo.com

TUNISIA

Global Kite
tel: 00216 97 270 931
moez@globalkite.com

TURKEY

Adrenaline Sports
tel: 0090 216 48 59 070
kemal@adrenalinesports.com.tr

UNITED KINGDOM

List of dealers on:
www.crazy-fly.com

USA

Prokitesurf / Precision Kites
tel: 001 361 883 1473
info@prokitesurf.com

VENEZUELA

Coche Kite Sports Center
tel: 0058 414 794 2133
kitesurfchris@hotmail.com

VIETNAM

C2Sky Kitecenter
tel: 0084 916 655 241
c2skykitecenter@hotmail.com

© CrazyFly Kiteboarding 2009.
All rights reserved.
CrazyFly is a registered trademark.

Crazy Fly s.r.o.
Štefánikova 19
911 01 Trenčín
Slovakia

tel: 00421 32 743 42 72
fax: 00421 32 743 42 73
info@crazy-fly.com
www.crazy-fly.com

QUALITY YOU CAN TRUST.

SSHUKYARTSTUDIO



2010

INTRO

Quality story continues – we are sticking to our game plan.

We are defining quality in the kiteboarding industry, which really is the main focus of CrazyFly company, since we ever started building CrazyFly products. Our aim is not profit, but to provide kilters with top level quality equipment. We are always pleased to see happy and satisfied CrazyFly riders.

Quality of CrazyFly kiteboards is based on choosing the highest quality materials delivered from European suppliers, hand wet out lamination, hand finishing the boards, safe and effective packing and choosing reliable and experienced transport companies to bring everything to the customers. And it does not end only by delivering the product. CrazyFly has great after sale service and in a rare case of a warranty issue, we do take care of these without hesitation. The most important is - we handle these very fast. Just ask anybody who ever had some request or claim on CrazyFly.

As CrazyFly company is a direct producer of kiteboards located in Europe, we are always one step ahead of the competition. New ideas and concepts are developed directly in our own production. It is fast and effective and we are always able to follow the market demand immediately.

Continuing with our strategy to support young and talented riders, we introduce Pro version of CrazyFly Girls board – Hannah Whiteley Pro. This board is designed for experienced girls riders and girls competition.

This year we also added a brand new board to our collection – Shox – an ultimate free ride board.

To meet demands of new more aggressive riding styles, all 2010 CrazyFly kiteboards are equipped with High performance stainless steel inserts. Make sure you read more about our new QuickFix II footstraps system on next pages of our catalogue. Reading further, you will find unique Flex scale of all CrazyFly kiteboards. Some board models have stance indicator placed on the deck to help you set up your pads and straps.

Whatever product it is, CrazyFly is always Quality you can trust.

QUALITY YOU CAN TRUST.



JOZEF BUKOVČÁK

The Big Boss. He is the founder and starter of CrazyFly company. Jozef is the only owner, main director, and chief of R&D and production.



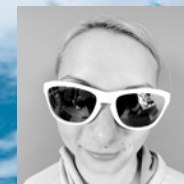
JOZEF BUKOVČÁK JR.

Sales and financial manager. He assures your satisfaction when you order CrazyFly products.



MICHAL BUKOVČÁK

Director of art & designs and technical support. This guy knows it all in terms of electronic graphic designs, web designs, and programming. Just give him a scratch on a piece of paper, and he will do his magic with computer.



MIRKA BUKOVČÁKOVÁ

Customer services. We need a lady's touch. She is the angel when customers have a little trouble and Mirka is the professional to help you.



TÁŇA DÁVIDKOVÁ

Sales and marketing. Tana is another professional in our sales department. Be sure that Tana will always find a way how to meet any of your demands.



PAVOL BUKOVČÁK

Graphic designer. He is a crazy young guy and is the style, design, and fashion of these days himself.



JURAJ BUKOVČÁK

Marketing & management consultant and editor. He gives meaningful advices to our top management based on his market research. Also translates the quality of the boards into words.



IVETA BUKOVČÁKOVÁ

Administration. She has to deal with everyday administration work. More or less, Iveta takes care of every job that the Big Boss assigns to her.

IN OUR HOUSE

Welcome in our house production located in Slovakia, Europe. Let me introduce you to our most important technologies and steps in producing the highest quality kiteboards.

The heart of the kiteboard is its core, so we paid great attention to choose the right materials for the production of CrazyFly kiteboards. Specially selected top quality wood maintains its natural flex properties, which are essential for excellent flex and pop of CrazyFly boards. Precisely CNC shaped Wood tech core II is the best solution for a kiteboard core on the market.



Get a piece of wood.



Sand paper your hands.

Check out the screen printing technologies in our house, which gives us the freedom and space for creativity when designing the graphics of the boards. Unlimited choice of colors and screen prints is essential for crazy CrazyFly designs. High quality of paint and UV stable top sheets assures that the board will maintain its looks for a long time.



Arrange your window set up.



Pretend painting.

One of the most important steps in production is precise hand wet out lamination and molding. Specially selected epoxy and carbon assure top quality and low weight of the boards. Carbon has very high strength in tension and high stiffness in flexion. Carbon fiber composites are ten times stronger than steel and still five times lighter. You can find Carbon on the most sophisticated products humans had ever built: formula one, space shuttles, or big commercial airplanes.



Become a surgeon.



Get a drink!



Heat it UP!

After molding the boards, we use our precise CNC machine to cut the outline of the boards. This machine is so incredible; it can also shape the ABS rails to be three dimensional.



Try to use your undiscovered super power and cut the outline doing a magic trick.

We pay a great deal of attention to Quality Control of all small details on every board, because CrazyFly really is the quality you can trust. Every board is assigned with QC list since the beginning of the production process, so we know everything about each board. Having and directing our own production every day gives us a great competitive advantage. We are able to control all production processes and change things anytime we want. This also allows us to stay ahead and react to market demands faster than anyone else.



Measure something you have no idea about.

Welcome in our house production located in Slovakia, Europe.

Although the CNC machine is very advanced there is nothing better than hand fine finished, polished and shined 3D ABS rails. Extra hand work just because we like our boards to be perfect and beautiful.



Make it beautiful.

Last, but definitely not least is packing and delivering. All boards are safely packed, so they can reach customers without any damage. Our extremely fast services and deliveries are one of our biggest advantages and we really love using this advantage. Try to work with professionals.



Steal one from the company.

QUALITY YOU CAN TRUST.

IN OUR HOUSE

ROCKY PRO MODEL

ROCKY PRO MODEL

Rocky Pro model board, also known in the past as "a piece of art" still remains to be a piece of art for 2010. Although, we thought of renaming it to "that's a sexy stick" as mentioned in the KiteWorld magazine board test article. CrazyFly is very proud of this board as it was ranked in the Top 3 Freestyle boards in the world by the KiteWorld magazine. This board was developed with and for pro riders. It means that it is a top level board for free style competition.

In the developments of the 2010 Rocky board we focused on many important aspects to improve the overall riding performance of the board. We kept the same great shape and rocker line of the 2009 model, but improved the progressive flex tips, shock absorbing system, stiffness and pop of the board. Also, we included a wider stance option for better stability when landing difficult free style tricks and a new Quick Fix system II along with new straps. Overall Rocky is the absolute top level new school free style board. Oops, we almost forgot to mention that it is also a full carbon board. Main advantage of the Rocky board is that you can use it for even the most difficult new school free style tricks and aggressive riding style. Rocky board is very stiff, with wide tips for better landings and a lot of pop for higher jumps. Rocky has brand new stainless steel inserts and stance indicator, which makes it easy for the rider to decide the stance width.

Rocky is produced with full Nano Carbon technology. Carbon has very high strength in tension and high stiffness in flexion. It is 5 times lighter, but still 10 times stronger than steel. We are the only company with a serial production of full carbon boards with a nice price. Hi tech construction of Rocky Pro model combining layers of carbon with CNC shaped Wood Tech core II and ABS side walls, make the board one of the lightest in the world with excellent flex, pop and overall performance.

Rocky comes with new leather straps, dual density EVA pads, Quick fix system II, and

125x41

130x40

134x41



BOARD BENEFITS:

- Top class board
- This board is very stiff with a lot of pop
- Carbon construction makes the board lighter and you will really feel the difference during jumps. It also makes the board stronger and lowers the breakability
- Tip To Tip wood tech core II has no joints, maintains wood's natural flex properties, and is incredibly light. The rider can enjoy a light board with excellent flex and pop properties

High performance new school free style board for competition level.



BOARD SELECTOR:

LEVEL OF RIDING: BEGINNER / ADVANCED / EXPERT
RIDING STYLE: FREESTYLE / FREERIDE
FLEX: SOFT / MEDIUM / STIFF

QUALITY YOU CAN TRUST.

RAPTOR PRO

RAPTOR PRO

Raptor – this freestyle and freeride full carbon best selling board is slowly becoming a legend in CrazyFly board range.

The 2010 Raptor is building up on the great performance of the 2009 Raptor which had a really good balance of stiffness and flex with amazing pop for both comfortable and aggressive riding. In the development of the 2010 Raptor we focused on many important aspects to improve the overall riding performance of the board. Improved rocker line, progressive flex tips, shock absorbing system, new Quick Fix system II, and new straps are the most significant results of our developments for the Raptor 2010. We have improved the rocker line to make the board faster and enhance its upwind abilities. Also, the 2010 Raptor is softer than the 2009 model, according to the feedback from our test riders and customers. Main advantage of the Raptor board is that you can use it for all new school free style tricks as well as for aggressive free ride.

Raptor is produced with full Nano Carbon technology. Carbon has very high strength in tension and high stiffness in flexion. It is 5 times lighter, but still 10 times stronger than steel. We are the only company with a serial production of full carbon boards with a nice price. Hi tech construction of Raptor combining layers of carbon with CNC shaped Wood Tech core II and hand fine finished ABS side walls, make the board one of the lightest in the world with excellent flex, pop and overall performance. Raptor has brand new stainless steel inserts and stance indicator, which makes it easy for the rider to decide the stance width.

Raptor comes with new leather straps, dual density EVA pads, Quick fix system II, carbon grab handle and thin profile G10 fins.

127x38

127x40

132x39

132x41

132x43

137x41

137x43



BOARD BENEFITS:

- Best selling board
- Medium flex for smooth comfortable free ride and soft landings
- Carbon construction makes the board lighter and you will really feel the difference during jumps. It also makes the board stronger and lowers the breakability
- Tip To Tip wood tech core II has no joints, maintains wood's natural flex properties, and is incredibly light. The rider can enjoy a light board with excellent flex and pop properties

The rider can enjoy smooth freeride, but if the board is pushed harder, you can have a freestyle session.



BOARD SELECTOR:

LEVEL OF RIDING: BEGINNER / ADVANCED / EXPERT
RIDING STYLE: FREESTYLE / FREERIDE
FLEX: SOFT / MEDIUM / STIFF

QUALITY YOU CAN TRUST.

SHOX

SHOX

Shox is a brand new board in our range. It is an ultimate free ride board. The rider can feel a new way of riding. We have very high expectations of this board and we are sure it will exceed yours.

132x41

133x43

136x41



BOARD BENEFITS:

- Up wind machine
- Very flexy soft board for comfortable free ride and soft landings
- Unique high temperature ultimate fiber glass construction makes the board softer and unbreakable
- High tensile strength Uni Directional Carbon fibers make the board lighter
- Tip To Tip wood core has no joints, maintains wood's natural flex properties, and is incredibly light

Ultimate freeride board.
Rider will feel a new way of riding.



The heart of the kiteboard is its core, so we paid great attention to choose the right materials for the production of CrazyFly kiteboards. We have decided to choose the lightest and overall the best available wood for cores in the snowboarding industry. The wood is one continuous piece from tip to tip without any joints, because every joint causes a breaking point. We called this tip to tip technology and this allows the wood to maintain its natural flex properties, which are essential for excellent flex and pop of CrazyFly boards. Our goal was to have a core with properties and advantages of wood and to keep it very light. tip to tip CNC shaped wood core turned out to be the right solution for Shox core in combination with Uni directional carbon fibers and layers of glass.

Hi tech construction of Shox combining layers of glass and Uni directional carbon with CNC shaped Tip to Tip wood core and ABS side walls, make the board one of the lightest in the world with excellent flex, pop and overall performance. The 2010 Shox has a brand new shape with the improved rocker line to make the board faster and enhance the upwind ability of the board. CrazyFly unique tail shape helps the rider to load up an edge for higher jumps and better tricks. Concaved bottom is one of the main characteristics of the shape of CrazyFly kiteboards. The board is more stable in carves, easy to switch and rides smoothly. Shox has brand new stainless steel inserts.

Shox comes with new leather straps, dual density EVA pads, Quick Fix system II, carbon grab handle and thin profile G10 fins.

QUALITY YOU CAN TRUST.

BOARD SELECTOR:

LEVEL OF RIDING: BEGINNER / ADVANCED / EXPERT
RIDING STYLE: FREESTYLE / FREERIDE
FLEX: SOFT / MEDIUM / STIFF

BULLDOZER

BULLDOZER

The new version of CrazyFly's full carbon vehicle is ready to drive you through some fun rides. The 2009 Bulldozer had a really good balance of stiffness and flex with amazing pop for both comfortable and aggressive riding. This year we have successfully enhanced the strengths of this board.

In the development of the 2010 Bulldozer we focused on many important aspects to improve the overall riding performance of the board. Improved flex on the tips, shock absorbing system, new Quick Fix system II, and new straps are the most significant results of our developments for Bulldozer 2010. Bulldozer is a stiffer board than Raptor. It also has a wider stance option and is designed more for aggressive style of riding. Main advantage of Bulldozer is that you can use it for all new school free style tricks as well as for aggressive riding. Bulldozer has brand new stainless steel inserts and stance indicator, which makes it easy for the rider to decide the stance width.

Bulldozer is produced with high tensile strength Uni Directional Carbon fibers technology. Carbon has very high strength in tension and high stiffness in flexion. It is 5 times lighter, but still 10 times stronger than steel. We are the only company with a serial production of full carbon boards with a nice price. Hi tech construction of Bulldozer combining layers of carbon with tip to tip CNC shaped Wood core and ABS side walls, make the board one of the lightest in the world with excellent flex, pop and overall performance.

Bulldozer comes with new leather straps, dual density EVA pads, Quick Fix system II, carbon grab handle and thin profile G10 fins.

130x41

135x39

135x41



BOARD BENEFITS:

- Flex is between medium and stiff. Bulldozer is stiffer than Raptor Pro, but softer than Rocky Pro model
- High tensile strength Uni Directional Carbon fibers make the board lighter and you will really feel the difference during jumps. It also makes the board stronger and lowers the breakability
- Tip To Tip wood core has no joints, maintains wood's natural flex properties, and is incredibly light. The rider can enjoy a light board with excellent flex and pop properties

The rider can enjoy all the benefits of new school free-style board and aggressive riding.



BOARD SELECTOR:

LEVEL OF RIDING: BEGINNER / ADVANCED / EXPERT
RIDING STYLE: FREESTYLE / FREERIDE
FLEX: SOFT / MEDIUM / STIFF

QUALITY YOU CAN TRUST.

GIRLS

HANNAH WHITELEY PRO

GIRLS HW PRO

This board is especially developed and designed for our pro rider Hannah Whiteley. It is build specifically for experienced girls riders and girls competition, has narrower stance, pink footpads and small S - size straps to fit girls perfectly. Hannah Whiteley Pro board has the same shape as our Raptor board, and is stiffer than the Girls board. Boards for Hannah are delivered from our serial production, so there is no difference between Hannah's board and the boards sold to customers. Ride exactly what the Pro's are riding.

The advantage of this board is that you can use it for free style competition and new school free style tricks. This competition board is produced with tip to tip Wood core in combination with layers of glass and Uni directional carbon fibers to make the board stiffer.

This board comes with new S-size leather straps, pink dual density EVA pads, Quick Fix system II, pink grab handle and thin profile G10 fins.

132x39



BOARD SELECTOR:

LEVEL OF RIDING: BEGINNER / ADVANCED / EXPERT

RIDING STYLE: FREESTYLE / FREERIDE

FLEX: SOFT / MEDIUM / STIFF

GIRLS

GIRLS

This very comfortable and relatively soft board designed to fit Girls preferences has many different attributes than a regular men's board. It has narrower stance, pink footpads and small S - size straps to fit girls perfectly. Girls board has a very well tested shape with a softer core which makes it very comfortable. The new glitter graphics which sparkle on the sun are a nice designing touch to make you feel like you own another piece of jewelry.

The great thing about the Girls board is that you can use it for both comfortable free ride as well as for free style tricks. It is build with tip to tip Wood core which is essential for excellent flex and pop of CrazyFly boards.

Girls board comes with new S-size leather straps, pink dual density EVA pads, Quick Fix system II, pink grab handle and thin profile G10 fins.

Board especially designed for girls.

127x38
132x39
135x41



BOARD SELECTOR:

LEVEL OF RIDING: BEGINNER / ADVANCED / EXPERT

RIDING STYLE: FREESTYLE / FREERIDE

FLEX: SOFT / MEDIUM / STIFF

QUALITY YOU CAN TRUST.

ALLROUND

ALLROUND

Our Allround 2010 is a great combination of high quality, amazing performance and reasonable price. This line of boards has always been known for the above reasons, and the 2010 Allround is not an exception.

Full transparent wood has become a must for our Allround boards and together with cool graphics they give the board more than an average look. CNC shaped full wood core and beveled ABS side walls enhance the unbelievable upwind ability, flex and pop which enable the board to be used by a wide range of riders. CrazyFly Allround is ready to be pushed to its limits on water by beginners, intermediate and advanced riders. Please be prepared to feel the quality under your feet. New Allround 2010 is better equipped with accessories than the 2009 model. It has Super light weight dual density EVA footpads, G10 fins and new Quick Fix system II.

The heart of the kiteboard is its core, so we paid great attention to choose the right materials for the production of CrazyFly kiteboards. We have decided to choose the lightest and overall the best available wood for cores in the snowboarding industry. The wood is a continuous one piece from tip to tip without any joints, because every joint causes a breaking point. We called this tip to tip technology and this allows the wood to maintain its natural flex properties, which are essential for excellent flex and pop of CrazyFly boards.

Allround comes with straps, dual density EVA pads, Quick Fix system II, grab handle and thin profile G10 fins.

135x40

138x40

138x43

145x41

145x48



BOARD BENEFITS:

- This board is suitable for beginners and schools as well as intermediate riders
- Fiber glass construction makes the board soft and very comfortable
- Tip To Tip wood core has no joints, maintains wood's natural flex properties, is and is incredibly light. The rider can enjoy a light board with excellent flex and pop properties
- Top class finish and modern design

Great combination of high quality, amazing performance and reasonable price.



BOARD SELECTOR:

LEVEL OF RIDING: BEGINNER / ADVANCED / EXPERT
RIDING STYLE: FREESTYLE / FREERIDE
FLEX: SOFT / MEDIUM / STIFF

QUALITY YOU CAN TRUST.

CRUISER PRO CRUISER LW

CRUISER PRO

Cruiser Pro 2010 is a carbon light wind machine. The name of this board explains it all. Cruising around, having fun and enjoying the ride even in the lightest winds. Of course, this board can handle a lot more than that.

Due to its unique core construction combined with extremely light layers of carbon, Cruiser Pro can also be ridden with some amount of aggression. Very well balanced medium flex of this board suits intermediate and advanced riders. Board rides comfortably in choppy waters, has flat rocker and narrower tips which make it an incredible light wind board. It is built with Wood tech core II, which is extra light and provides excellent flex and pop.

Cruiser Pro board comes with new leather straps, dual density EVA pads, Quick Fix system II, carbon grab handle and thin profile G10 fins.

CRUISER PRO



135x46 145x44
145x48

CRUISER LW



154x41

BOARD SELECTOR:

LEVEL OF RIDING: BEGINNER / ADVANCED / EXPERT
 RIDING STYLE: FREESTYLE / FREERIDE
 FLEX: SOFT / MEDIUM / STIFF

Cruiser Pro is a light wind machine.

THUNDER

THUNDER 6'2"

CrazyFly 2010 wave board comes in 6'2" size. Thunder has the construction of a real surf board. High density EPS core reinforced with wood on the deck are the most balanced combination for the best wave riding experience. Real surf rails tucked under edge make it easy to hold carves perfectly, whether it is a sharp one or a wider one.

Flat rocker and concave bottom generate superior rocket like glide to make you feel like a flying bullet. Unlike a real bullet, this one is under control. Due to its round tail shape this wave board's responsiveness and agility, with low effort from the rider, is incredible. This wave board is one of the lightest and most durable products on the market.

It comes with one piece EVA pro footpad with heel step, symmetrical straps, and three future box fins.

Construction of a real surf board.

6'2"



BOARD SELECTOR:

LEVEL OF RIDING: BEGINNER / ADVANCED / EXPERT
 RIDING STYLE: FREESTYLE / FREERIDE
 FLEX: SOFT / MEDIUM / STIFF

QUALITY YOU CAN TRUST.

ROOKIE TRAINER KITE

ROOKIE

Fly like crazy to the sky with the new trainer kite made by CrazyFly. It was carefully designed & developed over a long period of time by our team of experts, to bring the best satisfaction and enjoyment when learning to kite. The most outstanding feature of the new Rookie's Trainer Kite, is its relaunchability. Everybody hates when the kite hits the ground, but with the new CrazyFly Rookie Trainer kite it is not a problem anymore. CrazyFly's unique design enables the kite to relaunch itself from the ground with almost no effort from you. If the Rookie kite hits the ground up side down it rolls over and reinflates by itself, and the wind picks it up to the sky. Allow the kite to do the work for you, and just enjoy the fun experience of flying the kite, in exchange of running to pick it up every time it falls down. The new CrazyFly Rookie kite stands up to the highest standards of quality and safety as well. It was build, not to meet, but to exceed all the expectations. It come in two sizes 2m2 & 3m2 and with two lines, handle bar, wrist safety leash, and a CrazyFly logoed hanging bag.

The Rookie is the first ever two line relaunchable trainer kite. Just pull on one line and the Rookie pops off the ground and easily relaunches. The most stable & smooth trainer out there!! Comes complete with bag, bar, handle, and lines Ready To Fly!!!! The kite has self-cleaning vents so any sand that gets in it will automatically be dumped out. Strategically positioned internal baffle vents evenly distribute pressure throughout the kite, making it the most durable trainer available. Being able to relaunch after a crash saves time and effort, and we are amazed at what these kites can hold up too. The 3 m2 also works great as a inexpensive kite to use with a mountainboard or skateboard because of its smooth power generation and amazing stability.

The first ever two
line relaunchable
trainer kite.

From a Rookie
to a Pro. Can you
pull it off?

2.0M²

3.0M²



You Tube
WATCH
ROOKIE
VIDEO!
youtube.com/watch?v=JneDiQKso1E

QUALITY YOU CAN TRUST.

RIDERS



**Hannah
Whiteley**
United Kingdom

RESULTS:

1st place Amateur Ladies BKSA tour 2007
2nd place Women Pro Freestyle BKSA tour 2008
3rd place KPWT Germany 2009
4th place KPWT France 2009
1st place Women Pro Freestyle BKSA tour 2009



**Peter
Whiteley**
United Kingdom

RESULTS:

1st place Seniors BKSA tour 2007
1st place Seniors Freestyle BKSA tour 2008
1st place Seniors Course Racing BKSA tour 2008
1st place Seniors Freestyle BKSA tour 2009



**Carol
Freitas**
Brazil



**Jeff
Howard**
USA



**Thorsten
Hans Tripp**
Singapore



**Ki Hwan
Kwon**
South Korea



**Shannon
Gormley**
USA



**Jonathan
Marsh**
USA



**Grom
Gormley**
USA

QUICK FIX II

Brand new way how to set up pads and straps faster than ever

1.



Mount the plastic parts.

2.



Pass the strap velcro through the plastic part and insert the plastic into the strap tunnel.

3.



Repeat step 2 on the other side of the strap. Adjust the strap size to your foot.

4.



Stick the velcro together with your foot inside. All you have to do now is enjoy your ride.

ACCESSORIES

HANDLES



ALLROUND

GIRLS

PRO

FOOT PADS



DUAL DENSITY PRO

DUAL DENSITY GIRLS

G10 FINS



3.0 cm



5.0 cm

BOARDBAGS

Single Boardbag: 130x40cm, 140x48cm, 155x52cm
Golfbag: 150x48cm
Golfbag with wheels: 150x48cm
Surf Bag



FOOT STRAPS

QuickFix II
QuickFix II "S"



BOARD SPECIFICATIONS



ROCKY PRO MODEL

SIZE: 125x41 130x40 134x41
WEIGHT: 2.4 kg 2.4 kg 2.6 kg
STIFFNESS: 1250 1200 1250

FLEX: VERY STIFF
STRAPS: QUICKFIX II
PADS: DUAL DENSITY
FINS: 5 CM G10
CORE: CNC WOOD TECH II
CONSTRUCTION: NANO CARBON TECH II
BOTTOM SHAPE: CONCAVE
SCOOP ROCKER: SPEED
RIDING STYLE: NEW SCHOOL, FREESTYLE



RAPTOR PRO

SIZE: 127x38 127x40
WEIGHT: 2.3 kg 2.4 kg
STIFFNESS: 780 790

SIZE: 132x39 132x41 132x43
WEIGHT: 2.4 kg 2.5 kg 2.6 kg
STIFFNESS: 760 770 790

SIZE: 137x41 137x43
WEIGHT: 2.6 kg 2.7 kg
STIFFNESS: 770 790

FLEX: MEDIUM
STRAPS: QUICKFIX II
PADS: DUAL DENSITY
FINS: 5 CM G10
CORE: CNC WOOD TECH II
CONSTRUCTION: NANO CARBON TECH II
BOTTOM SHAPE: CONCAVE
SCOOP ROCKER: SPEED
RIDING STYLE: FREESTYLE, FREERIDE



SHOX

SIZE: 132x41 133x43 136x41
WEIGHT: 2.8 kg 3.0 kg 3.0 kg
STIFFNESS: 680 700 720

FLEX: VERY FLEX
STRAPS: QUICKFIX II
PADS: DUAL DENSITY
FINS: 5 CM G10
CORE: 3T CNC WOOD
CONSTRUCTION: UD CARBON/FIBER GLASS
BOTTOM SHAPE: CONCAVE
SCOOP ROCKER: HIGH SPEED
RIDING STYLE: FREERIDE



GIRLS HW PRO

SIZE: 132x39
WEIGHT: 2.5 kg
STIFFNESS: 570

FLEX: MEDIUM
STRAPS: QUICKFIX II SMALL
PADS: DUAL DENSITY
FINS: 5 CM G10
CORE: 3T CNC WOOD
CONSTRUCTION: UD CARBON/FIBER GLASS
BOTTOM SHAPE: CONCAVE
SCOOP ROCKER: MEDIUM
RIDING STYLE: GIRLS FREESTYLE COMPETITION



BULLDOZER

SIZE: 130x41 135x39 135x41
WEIGHT: 2.6 kg 2.5 kg 2.7 kg
STIFFNESS: 900 800 850

FLEX: STIFF
STRAPS: QUICKFIX II
PADS: DUAL DENSITY
FINS: 5 CM G10
CORE: 3T CNC WOOD
CONSTRUCTION: UD CARBON
BOTTOM SHAPE: CONCAVE
SCOOP ROCKER: SPEED
RIDING STYLE: NEW SCHOOL, FREESTYLE, AGGRESSIVE RIDING



GIRLS

SIZE: 127x38 132x39 135x41
WEIGHT: 2.3 kg 2.5 kg 2.7 kg
STIFFNESS: 580 540 550

FLEX: VERY FLEX
STRAPS: QUICKFIX II SMALL
PADS: DUAL DENSITY
FINS: 5 CM G10
CORE: 3T CNC WOOD
CONSTRUCTION: FIBER GLASS
BOTTOM SHAPE: CONCAVE
SCOOP ROCKER: MEDIUM
RIDING STYLE: FREESTYLE, FREERIDE



CRUISER PRO

SIZE: 135x46 145x44 145x48
WEIGHT: 2.6 kg 2.9 kg 3.2 kg
STIFFNESS: 900 600 770

FLEX: MEDIUM
STRAPS: QUICKFIX II
PADS: DUAL DENSITY
FINS: 3 CM G10
CORE: 3T CNC WOOD
CONSTRUCTION: NANO CARBON TECH II
BOTTOM SHAPE: FLAT
SCOOP ROCKER: SPEED
RIDING STYLE: FREERIDE



CRUISER LW

SIZE: 134x44
WEIGHT: 3.5 kg
STIFFNESS: 600

FLEX: MEDIUM
STRAPS: QUICKFIX II
PADS: DUAL DENSITY
FINS: 5 CM G10
CORE: 3T CNC WOOD
CONSTRUCTION: FIBER GLASS
BOTTOM SHAPE: FLAT
SCOOP ROCKER: SPEED
RIDING STYLE: FREERIDE



ALLROUND

SIZE: 135x40
WEIGHT: 2.5 kg
STIFFNESS: 520

SIZE: 138x40 138x43
WEIGHT: 2.6 kg 2.8 kg
STIFFNESS: 470 520

SIZE: 145x41 145x48
WEIGHT: 2.8 kg 2.9 kg
STIFFNESS: 420 550

FLEX: VERY FLEX
STRAPS: ASYMETRIC
PADS: DUAL DENSITY
FINS: 5 CM G10
CORE: 3T CNC WOOD
CONSTRUCTION: FIBER GLASS
BOTTOM SHAPE: FLAT
SCOOP ROCKER: ALLROUND
RIDING STYLE: FREERIDE



THUNDER

SIZE: 6'2"
WEIGHT: 3.2 kg

FLEX: STIFF
STRAPS: SYMETRIC
PADS: WAVE
FINS: 11 CM EPOXY
CORE: EPS

CONSTRUCTION: EPOXY
BOTTOM SHAPE: CONCAVE
SCOOP ROCKER: WAVE
RIDING STYLE: WAVERIDING

QUALITY YOU CAN TRUST.

BOARD SELECTOR

ROCKY PRO MODEL

	125x41			
	130x40			
	134x41			

GIRLS HW PRO

	132x39			
--	--------	--	--	--

RAPTOR PRO

	127x38			
	127x40			
	132x39			
	132x41			
	132x43			
	137x41			
	137x43			

HOW TO USE BOARD SELECTOR

LEVEL OF RIDING: BEGINNER / ADVANCED / EXPERT
WIND CONDITIONS: LIGHT / MEDIUM / STRONG
WEIGHT OF RIDER: 70 kg / 80 kg / 90 kg

RIDING STYLE: FREESTYLE / FREERIDE
FLEX: SOFT / MEDIUM / STIFF

SHOX

	132x41			
	133x43			
	136x41			

BULLDOZER

	130x41			
	135x39			
	135x41			

GIRLS

	127x38			
	132x39			
	135x41			

ALLROUND

	135x40			
	138x40			
	138x43			
	145x41			
	145x48			

CRUISER PRO

	135x46			
	145x44			
	145x48			

CRUISER LW

	154x44			
--	--------	--	--	--

THUNDER

	6'2"			
--	------	--	--	--

QUALITY YOU CAN TRUST.